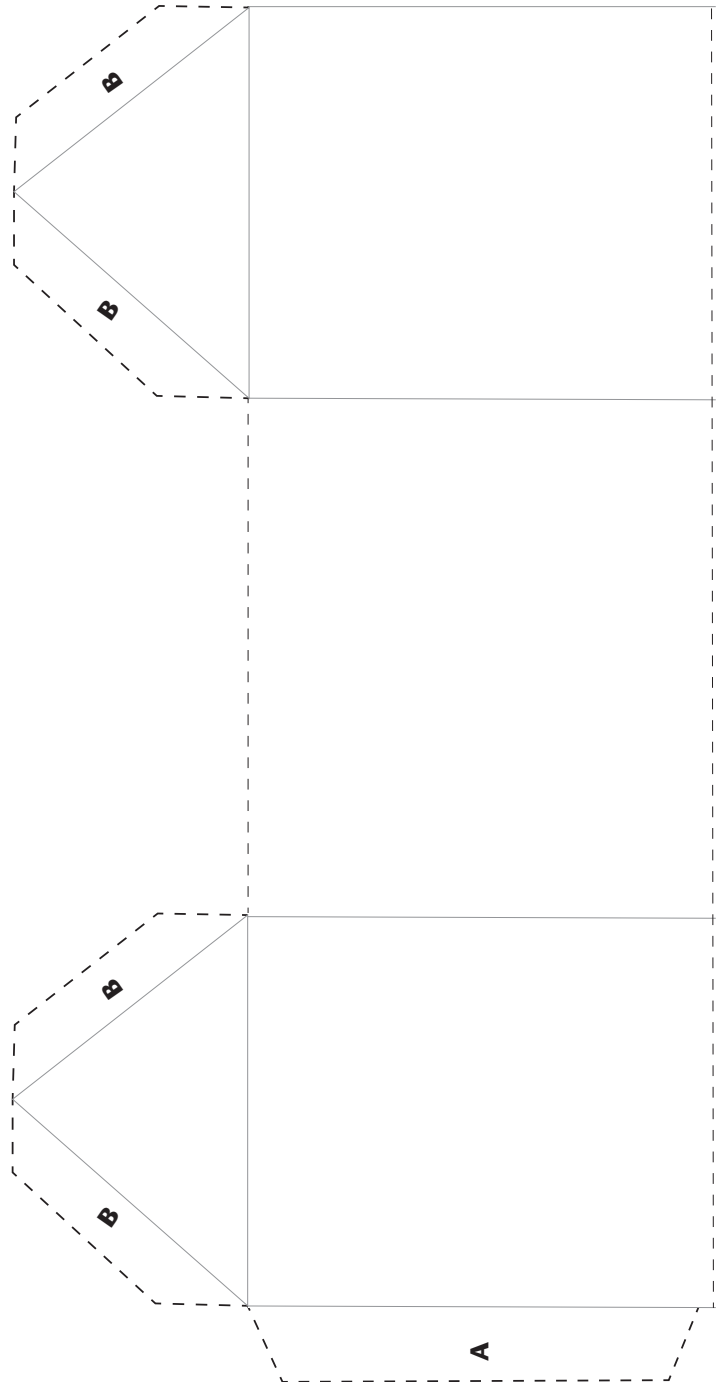


# Build a House

## Directions

1. Cut out the house and roof along the dotted lines.
2. Fold along all the solid lines on the house and roof, keeping the lines on the outside.



3. Glue tab A to the inside of the other edge of the house.
4. Glue the four tabs marked B to the roof. You'll need to reach your hand inside the house to push the roof and the tabs together.
5. Your house is finished!